

# STONY ISLAND PLAZA

95TH ST & STONY ISLAND AVE



**MID-AMERICA<sup>®</sup>**  
Asset Management, Inc.

Owned By:   
**NewMark Merrill**  
COMPANIES



RETAIL OPPORTUNITY



95TH ST & STONY ISLAND AVE

## Address

SEC 95th Street  
& Stony Island Avenue  
Chicago, IL

## Availability

1,190–2,765 SF

## Co-Tenants

**Jewel-Osco**

**dd's**  
DISCOUNTS

**ATHLETICO**  
PHYSICAL THERAPY

**Foot Locker**

**DTLR**



**AMERICA'S BEST**  
CONTACTS & EYEGLASSES

**KFC**

**H&R BLOCK**

**snipes**

## Features

- Over 83,000 reside within a 2 mile radius
- Chicago State University and Olive-Harvey College ( $\pm$  16,725 students combined) located approximately 1.5 miles from site
- Monument signage and 742 parking spaces available
- On-site Pace bus service and CTA bus stop on 95th Street with lighted access
- Close proximity to the 50, 57 and 94 freeways
- Traffic counts at the corner of Stony Island Ave & 95th St exceed 76,000 vehicles per day

## Demographics

	1 Mile	2 Miles	3 Miles
POPULATION	16,435	83,436	200,247
HOUSEHOLDS	6,530	32,567	77,052
AVG HOUSEHOLD INCOME	\$63,070	\$55,397	\$57,372
DAYTIME POPULATION	15,717	71,362	174,708





# STONY ISLAND PLAZA

95TH ST & STONY ISLAND AVE

Stony Island Avenue: 56,100 vpd

95th Street: 20,000 vpd



Suite	Tenant	SF
1615	Circle K	4,000
1617	KFC	2,685
1619	Snipes (Coming Soon)	5,000
1623	Available	1,190
1625	Available	2,765
1627	Happy Nails	3,500

Suite	Tenant	SF
1631	Ashley Stewart	3,640
1637	Star Beauty Supply (Coming Soon)	9,800
1655	Jewel-Osco	70,000
1709	dd's Discounts	24,960
1715	Oak Street Health	10,080

Suite	Tenant	SF
1725	Available	2,000
1729	DTLR	5,000
1733	H&R Block	2,000
1735	Available	1,495

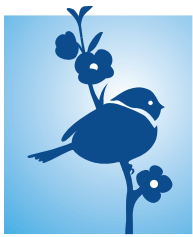
Suite	Tenant	SF
1737	BJ's Market & Bakery	1,170
1741	Foot Locker	3,500
1747	Athletico	2,420
1753	Seashell Restaurants	1,815
1751	America's Best	2,765
Total GLA		159,785

Suite	Tenant	SF
1651	Bank of America (Sperately Owned)	6,450
1625	Burger King (Sperately Owned)	6,500

SITE PLAN

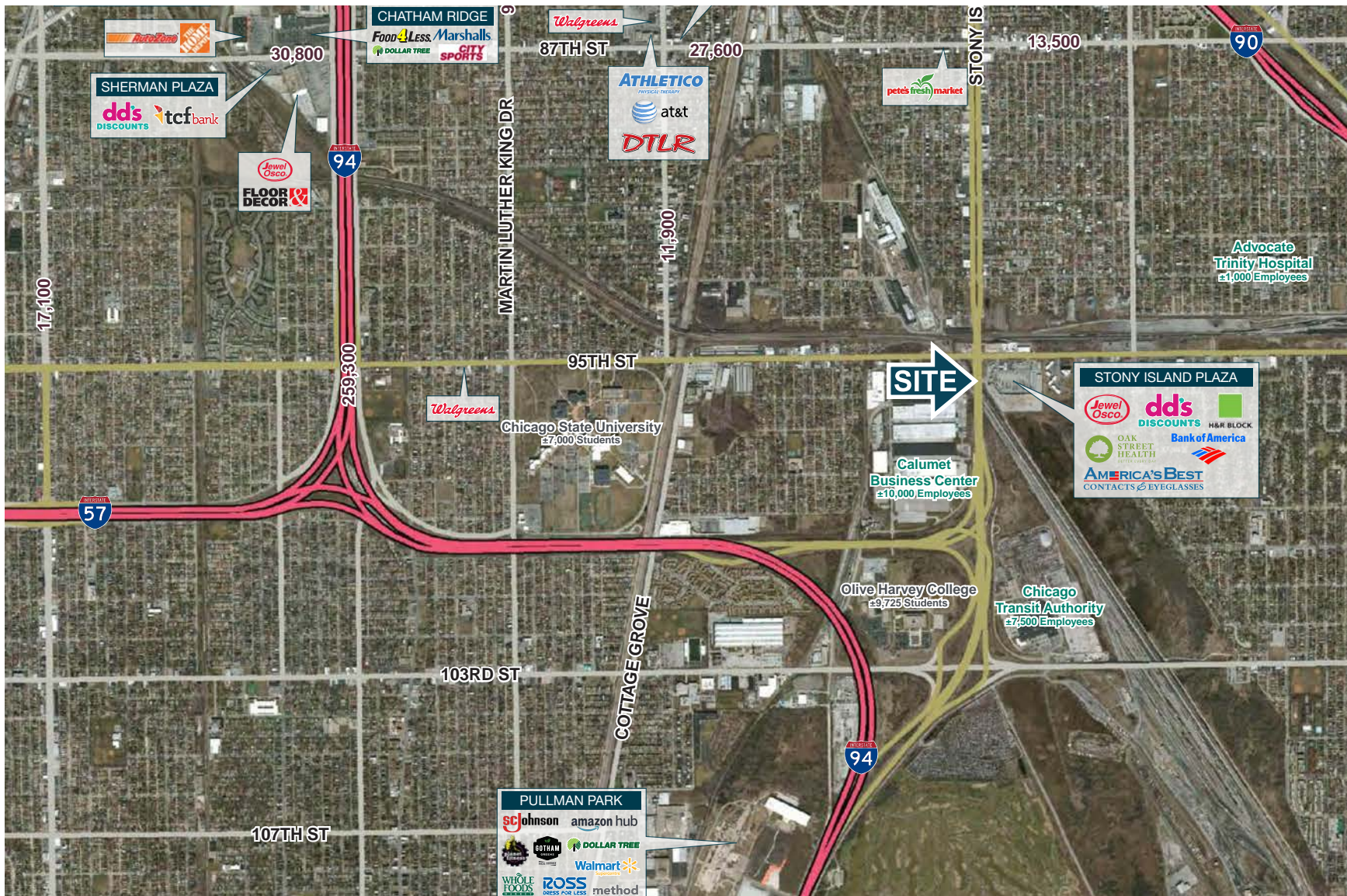




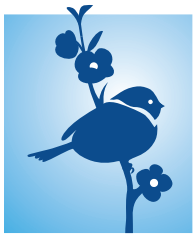


# STONY ISLAND PLAZA

95TH ST & STONY ISLAND AVE



AREA MAP



# STONY ISLAND PLAZA

95TH ST & STONY ISLAND AVE

## Campbell Wickland

Mid-America Asset  
Management, Inc.

T: 630.954.7236

F: 630.954.7304

**CWickland@MidAmericaGrp.com**

## Liz Krebs

Mid-America Asset  
Management, Inc.

T: 630.954.7362

F: 630.954.7304

**LKrebs@MidAmericaGrp.com**



**MID-AMERICA®**  
Asset Management, Inc.

One Parkview Plaza, 9th Floor  
Oakbrook Terrace, Illinois 60181  
630.954.7300

**MidAmericaGrp.com**

Owned By:



**NewMark Merrill**  
COMPANIES



CONTACT