



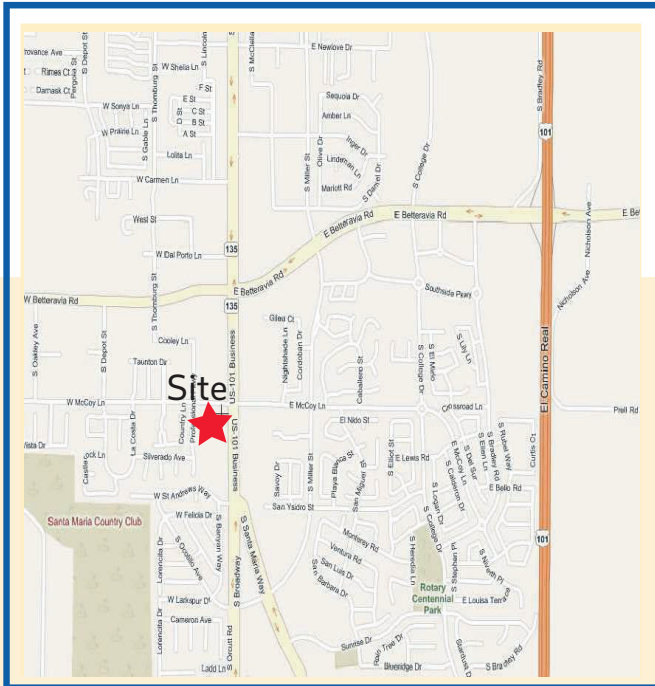
# NewMark Merrill COMPANIES

*When you love shopping centers it shows.*

## Santa Maria Commons

Southwest Corner of Mccoy Lane & S. Broadway Blvd.

LOCATED ON THE SOUTHWEST CORNER OF MCCOY LANE & SOUTH BROADWAY BLVD., SANTA MARIA, CALIFORNIA



**KOHL'S**



**YANAGI**

**Project Size** 117,364 Sq.Ft. of Retail Space  
**Demographics**



**Population\***

1 Mile.....17,780  
3 Miles....80,422



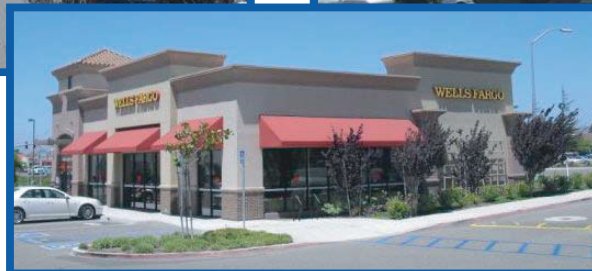
**Traffic Count\***

44,364 Cars Daily



**Average Household Income\***

1 Mile.....\$101,392  
3 Miles....\$95,252



### For Lease • Prime Retail Space Available

- Conveniently located west of the Highway 101 & north east of the Santa Maria Public Airport.
- High profile central location on busy, signalized intersection.
- Santa Maria is the largest city in Santa Barbara County, known for its ever expanding wine country.
- Anchor Tenants Include: Kohl's, Wells Fargo, Rite Aid
- Parking Spaces: 468

For additional information, please contact:

**Darren Bovard**

(DRE#01362187)

[dbovard@newmarkmerrill.com](mailto:dbovard@newmarkmerrill.com)

Tel: (818) 710-6100

Fax: (818) 710-6116

5850 Canoga Avenue  
Suite 650  
Woodland Hills, CA 91367

[www.newmarkmerrill.com](http://www.newmarkmerrill.com)

\*Estimates are based on 2022 demographics for population and average income per household. Traffic count is based upon owner's calculations. The information contained herein is not guaranteed and should be independently verified.





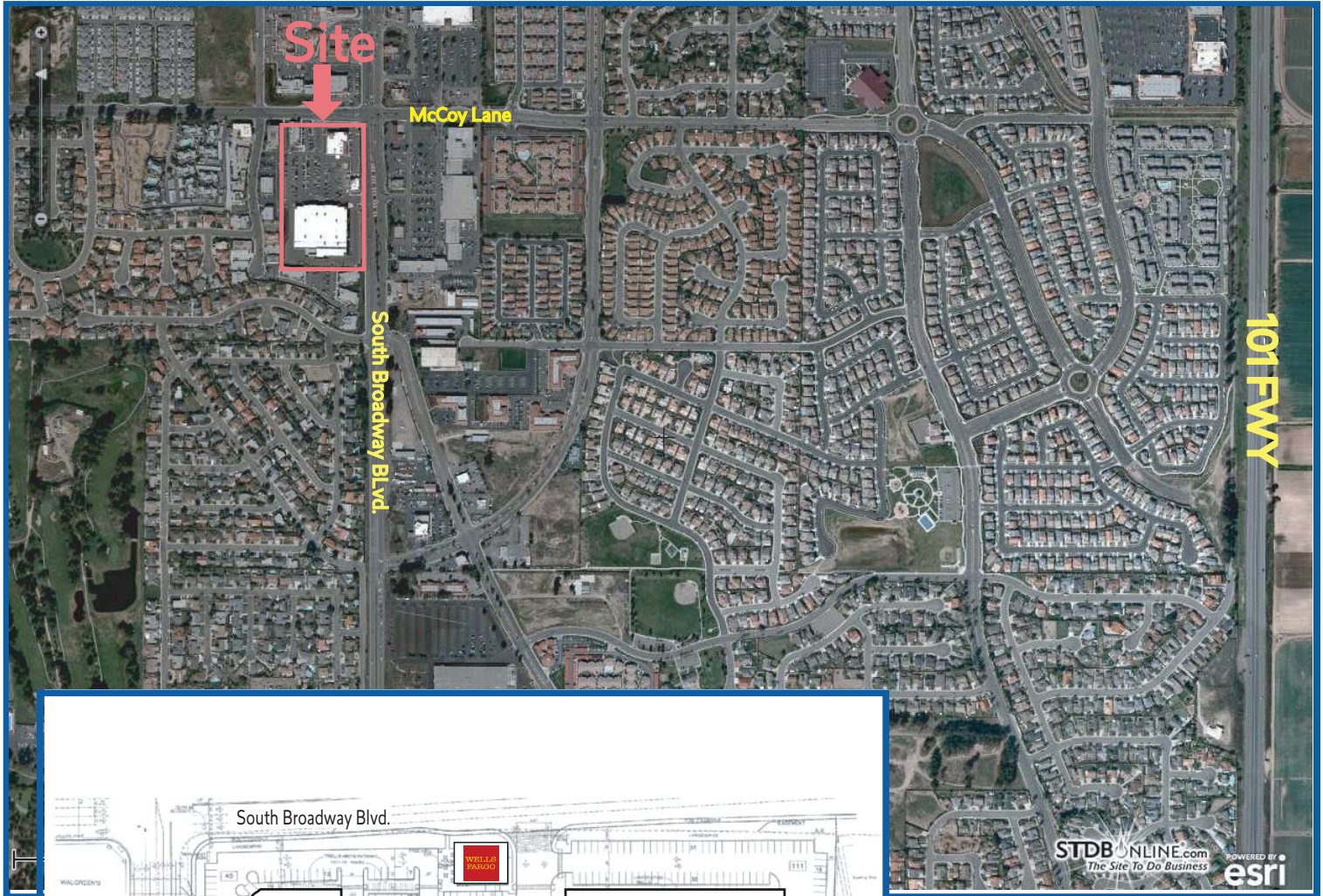
# NewMark Merrill COMPANIES

*When you love shopping centers it shows.*

## Santa Maria Commons

Southwest Corner of McCoy Lane & S. Broadway Blvd.

LOCATED ON THE SOUTHWEST CORNER OF MCCOY LANE & SOUTH BROADWAY BLVD., SANTA MARIA, CALIFORNIA



For additional information,  
please contact:

**Darren Bovard**

(DRE#01362187)

[dbovard@newmarkmerrill.com](mailto:dbovard@newmarkmerrill.com)

Tel: (818) 710-6100

Fax: (818) 710-6116

5850 Canoga Avenue

Suite 650

Woodland Hills, CA 91367

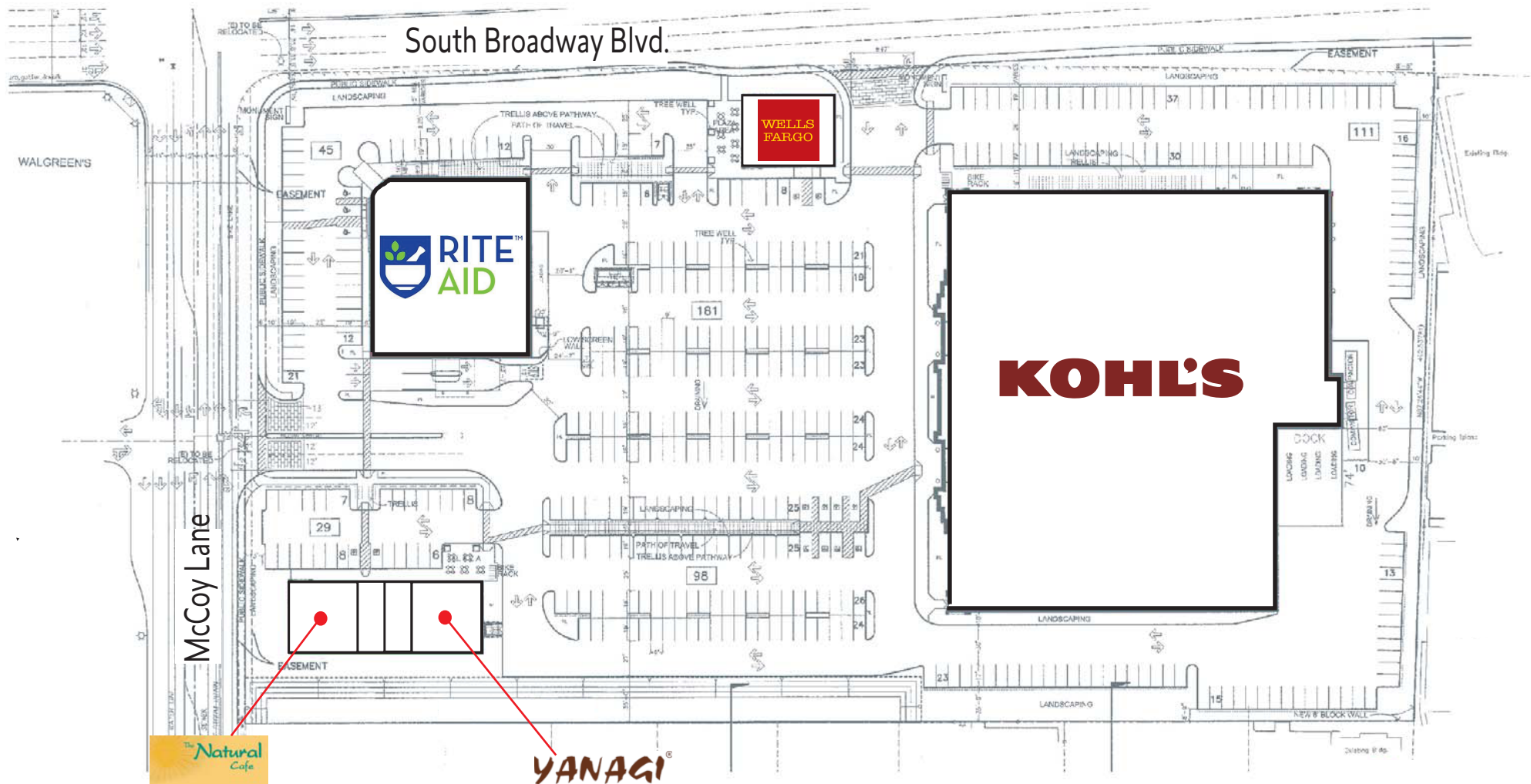
\*Estimates are based on 2009 demographics for population and average income per household. Traffic count is based on owner's calculations. The information contained herein is not guaranteed and should be independently verified.

[www.newmarkmerrill.com](http://www.newmarkmerrill.com)



# Santa Maria Commons

Southwest Corner of McCoy Lane and South Broadway Blvd.



NewMark Merrill  
COMPANIES

For Information, Please Contact  
Darren Bovard (DRE#01362187)  
NewMark Merrill Companies  
Tel: 818.710.6100 Fax: 818.710.6116

Landlord makes no representation that any of the above tenants or building configurations will exist now or in the future. Tenants depicted may be proposed and may not actually occupy the proposed buildings. The dimensions and square footages shown are estimates and not guaranteed.